



AAS

Association for
Academic Surgery

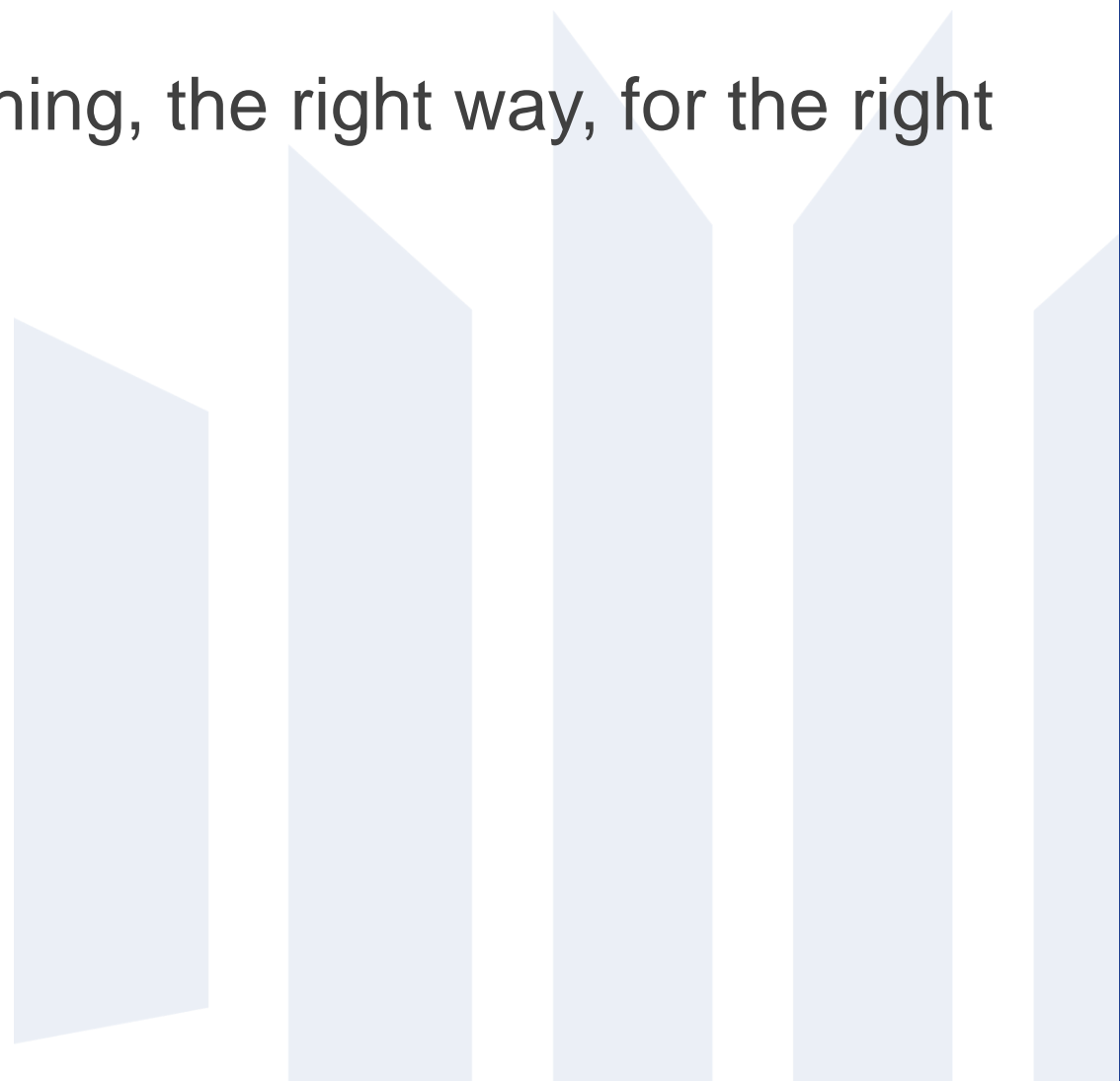
Quality and Appropriateness of Care

Virginia O. Shaffer MD FACS FASCRS
Associate Professor
Emory University

Disclosures

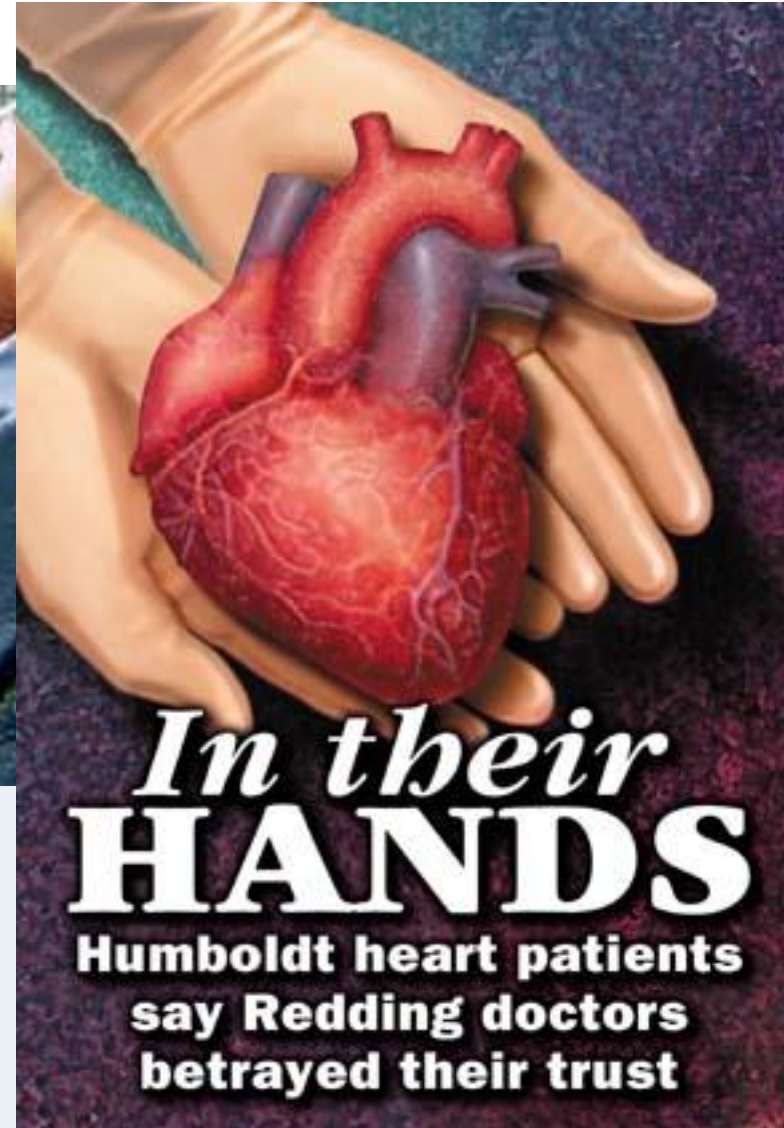
- none
- 

Integrity

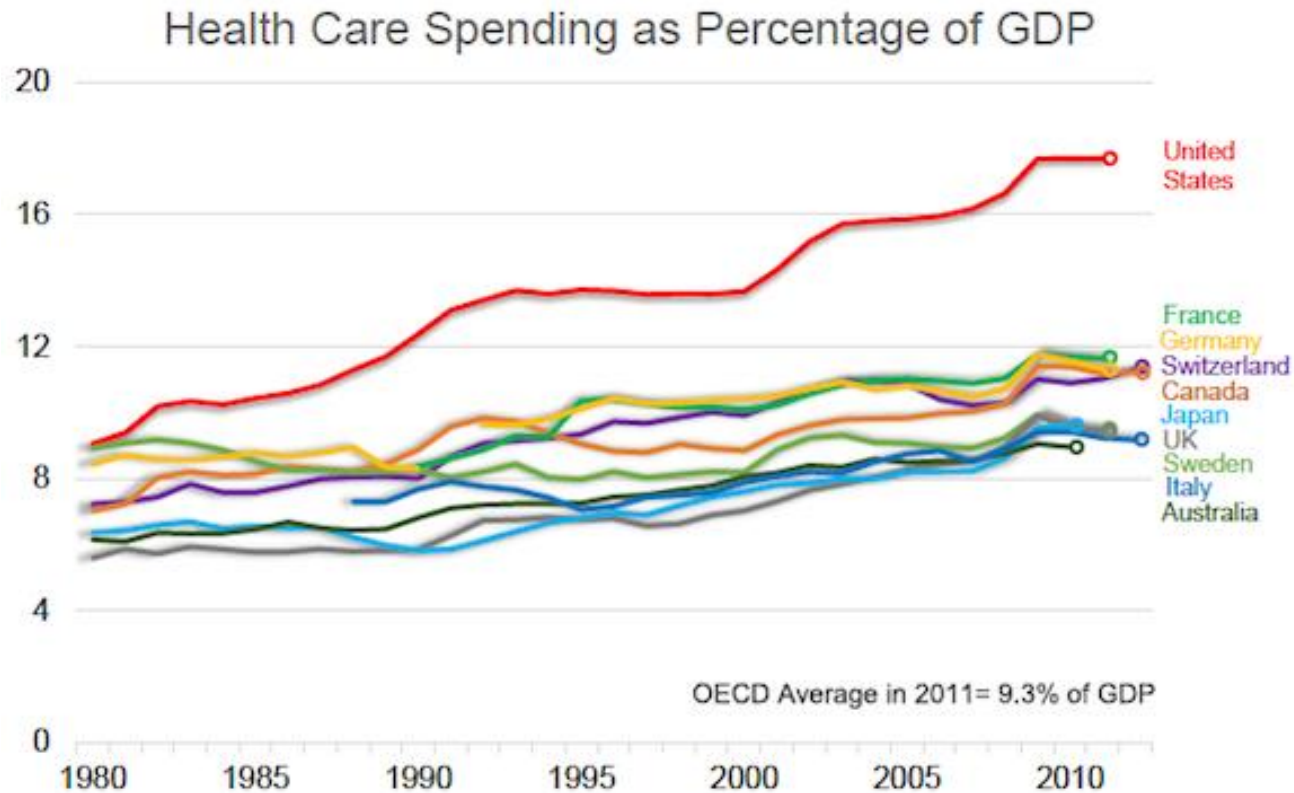
- Doing the right thing, the right way, for the right reasons...
- 

By Francie Grace AP November 4, 2002, 4:27 AM

Way Too Much Heart Surgery?



U.S.- Highest health care spending

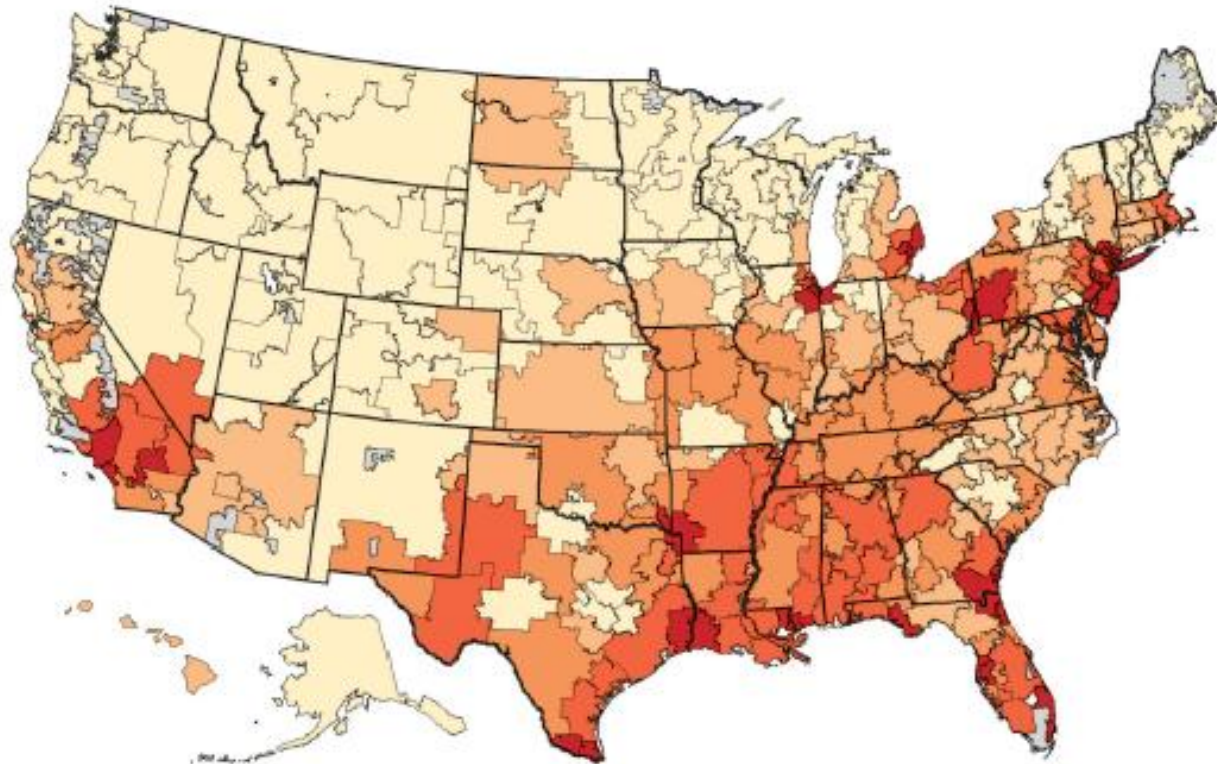


Source: OECD Health Data 2013.
Produced by Veronique de Rugy, Mercatus Center at George Mason University.

A Tale of 2 Cities

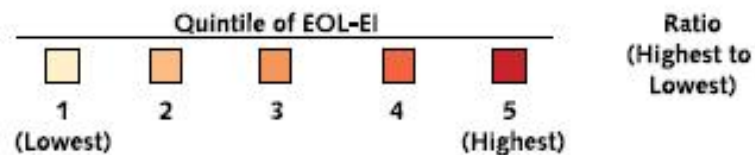


Variations in Medicare Spending

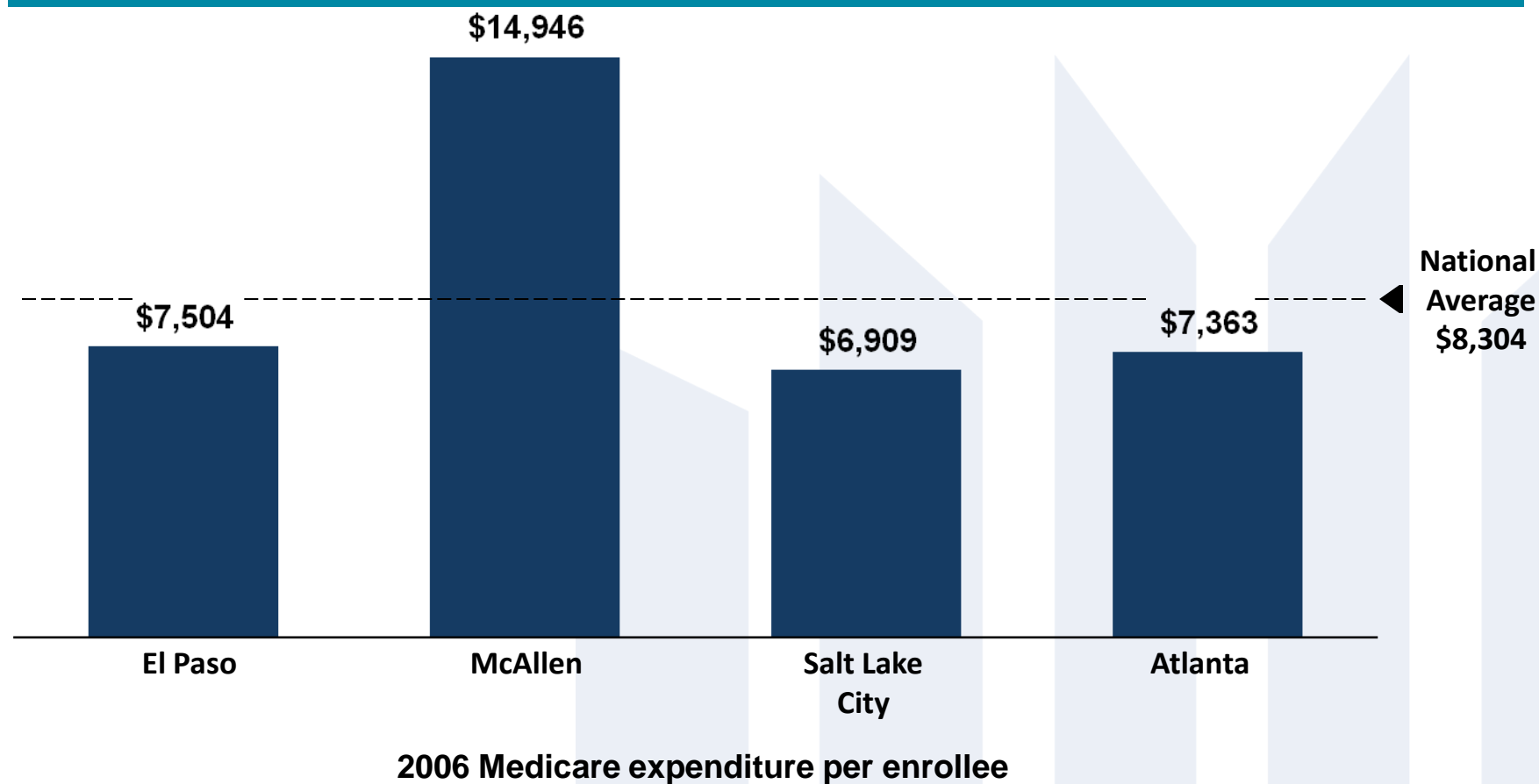


Attributes of U.S. HRRs in Different Quintiles of the EOL-EI*

Variable

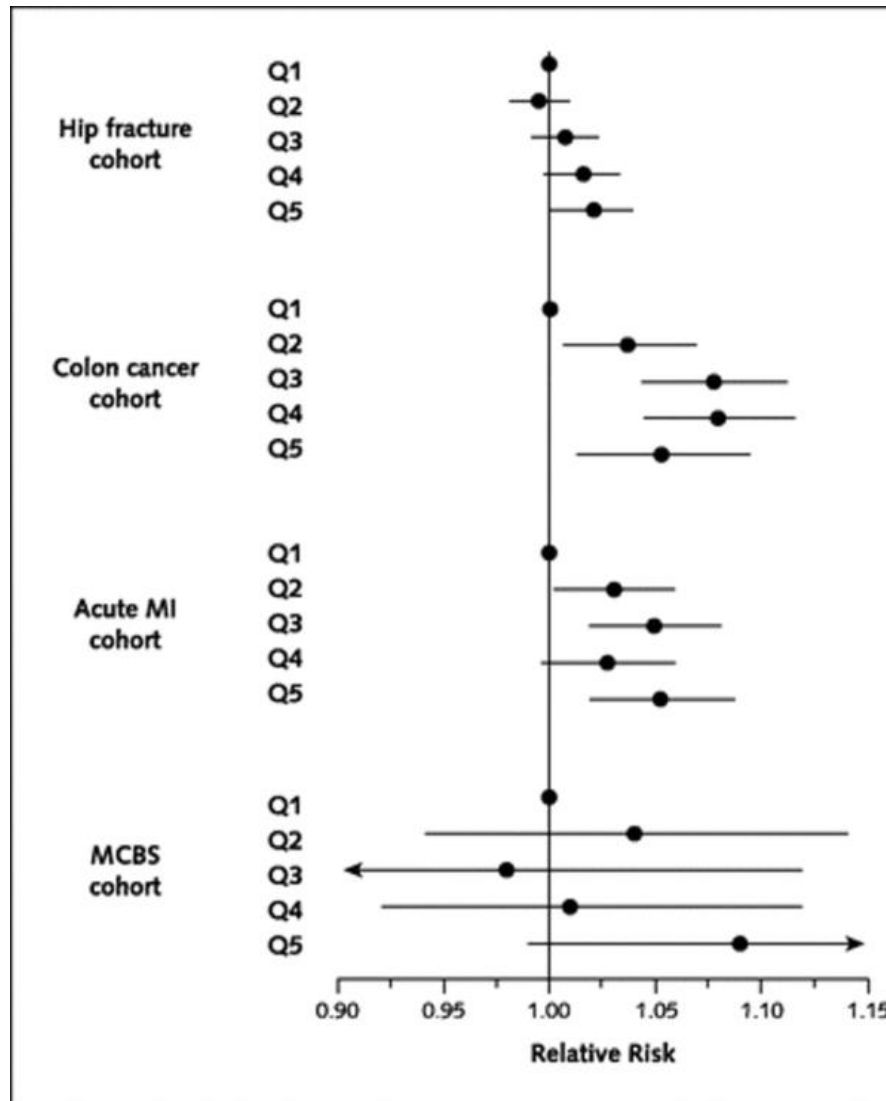


Wide variation in Medicare expenditures



McAllen expenditure per enrollee nearly 2x that of El Paso – both Texas cities with similar demographics

Adjusted Relative Risk for Death Across Quintiles



What is the “right” amount of care?



- One of the main drivers of care may be the supply of specialist

The New England Journal of Medicine

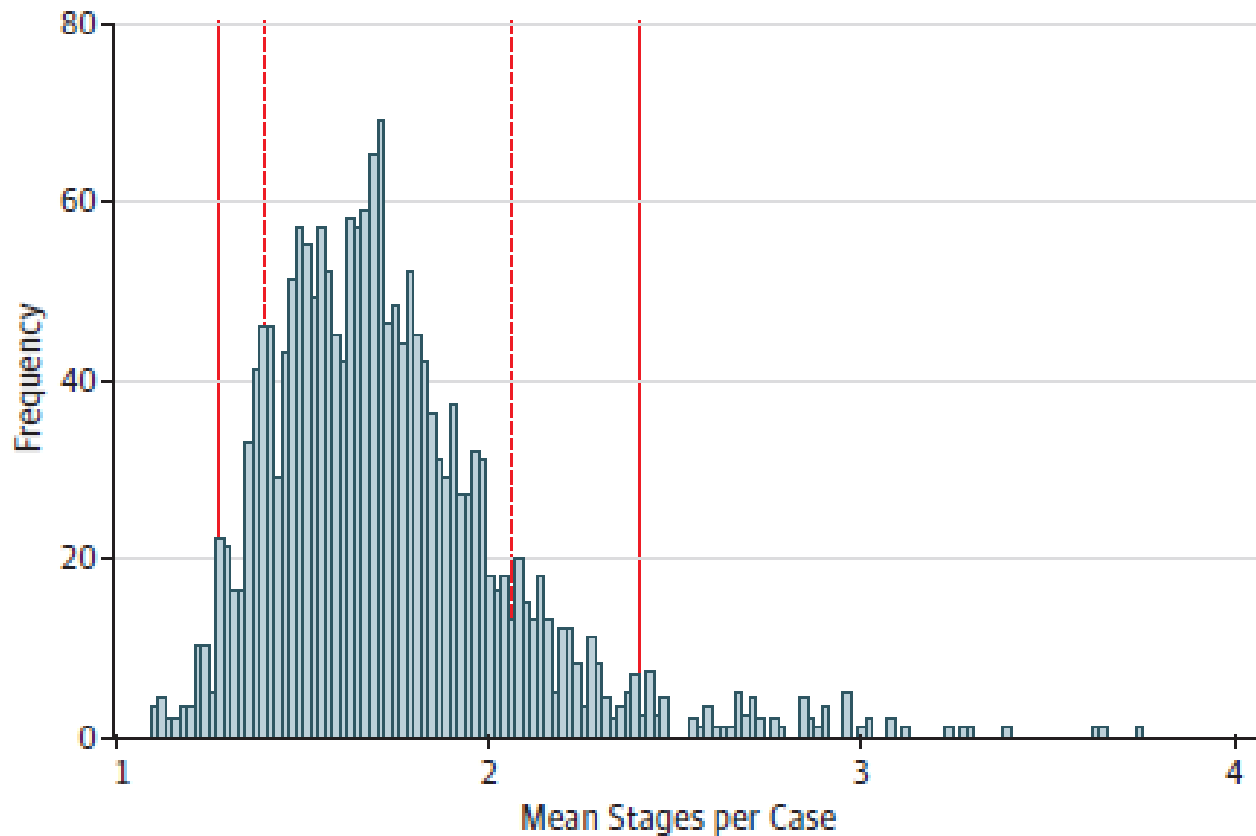
THE RELATION BETWEEN THE AVAILABILITY OF NEONATAL INTENSIVE CARE AND NEONATAL MORTALITY

DAVID C. GOODMAN, M.D., ELLIOTT S. FISHER, M.D., GEORGE A. LITTLE, M.D., THÉRÈSE A. STUKEL, PH.D.,
CHIANG-HUA CHANG, M.S., AND KENNETH S. SCHOENDORF, M.D.

Fuchs et al. J of Human Resources 1978
Fisher et al. Ann Int Med 2003
Wennberg et al. Health Affairs 2005
Goodman et al. NEJM 2002

Outlier Practice Patterns in Moh's Surgery

Figure 1. Distribution of Surgeons by Mean Stages per Case, 2012 to 2014



Stage 2 colon cancer

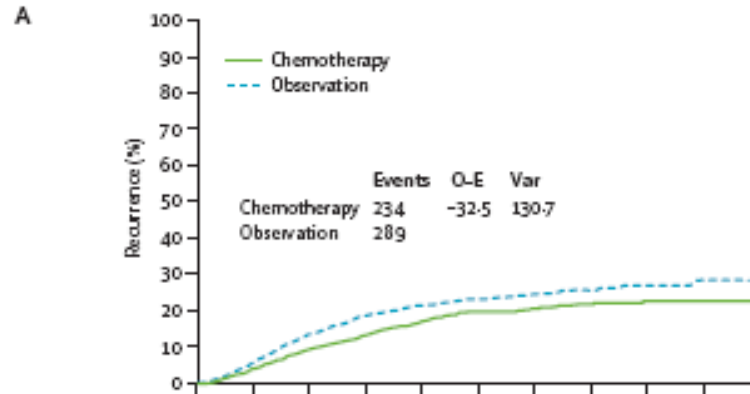


National
Comprehensive
Cancer
Network®

- <12 lymph nodes examined
- Poorly differentiated (not MSI-H), perineural, lymphovascular invasion, bowel obstruction, perforation, close margin
- Co-morbidities and life expectancy

Effect of Chemotherapy

Decreased risk of recurrence

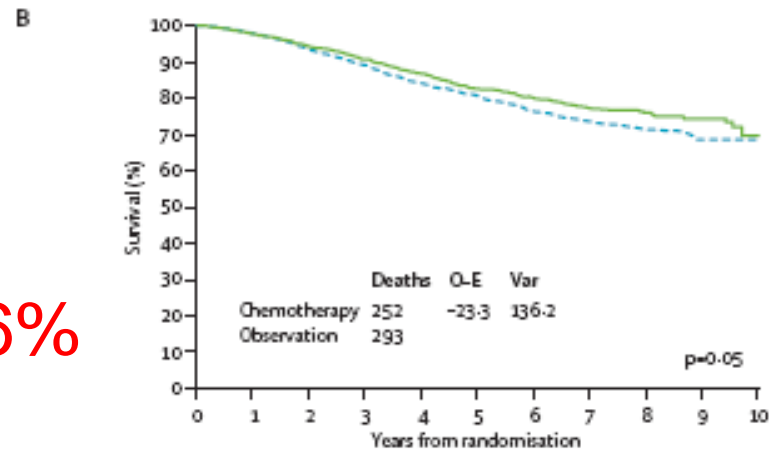


Number still at risk

Chemotherapy	1483	1298	1077	886	721	591	439	280	143	36	1
Observation	1480	1280	1013	834	685	554	400	269	142	38	.

Increased survival

Survival Benefit ~3.6%



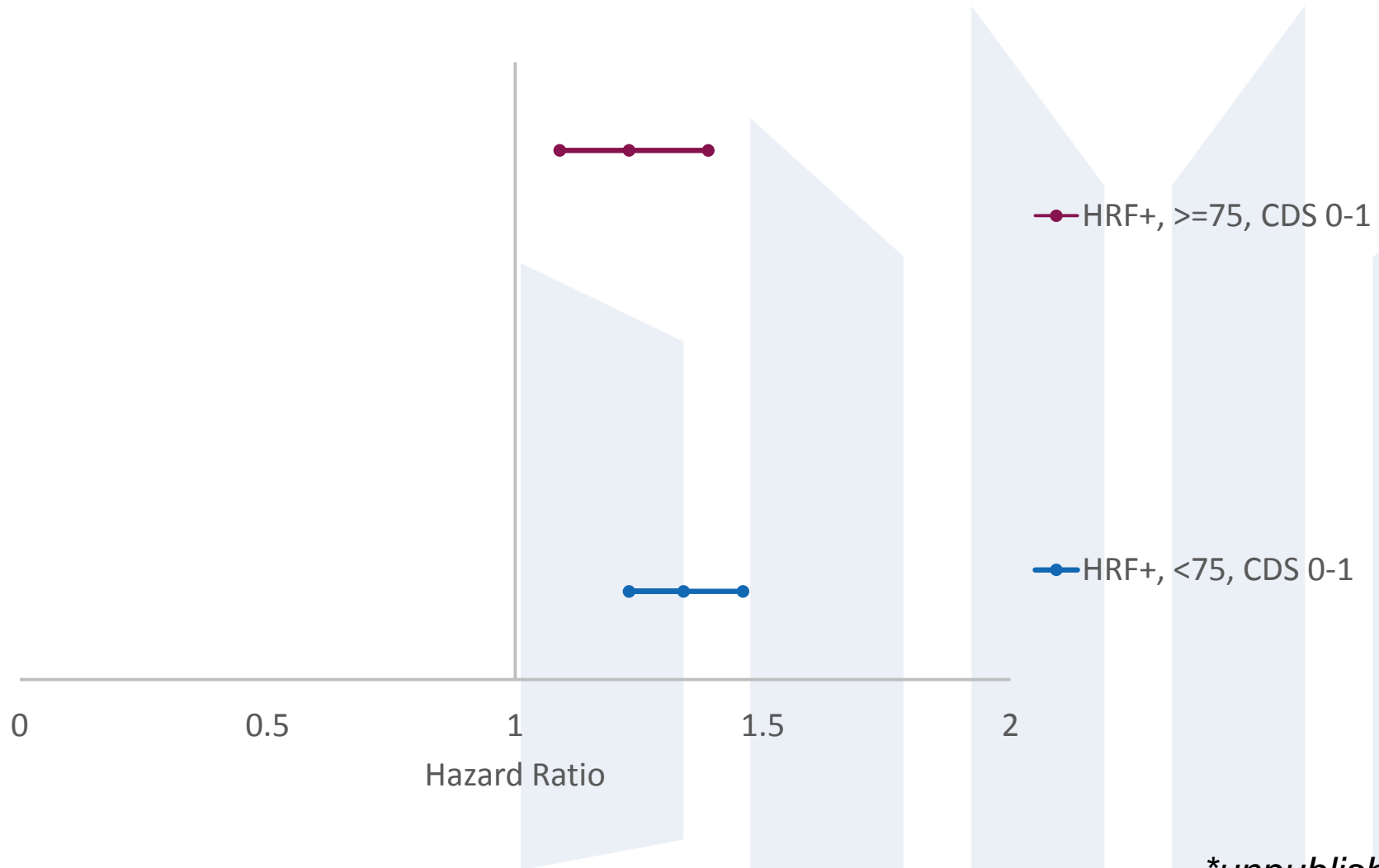
Number still at risk

Chemotherapy	1483	1381	1214	1006	841	709	573	405	255	113	17
Observation	1480	1388	1196	989	825	679	533	379	252	117	18

RR 0.78,
CI 0.67-0.91
p=0.001

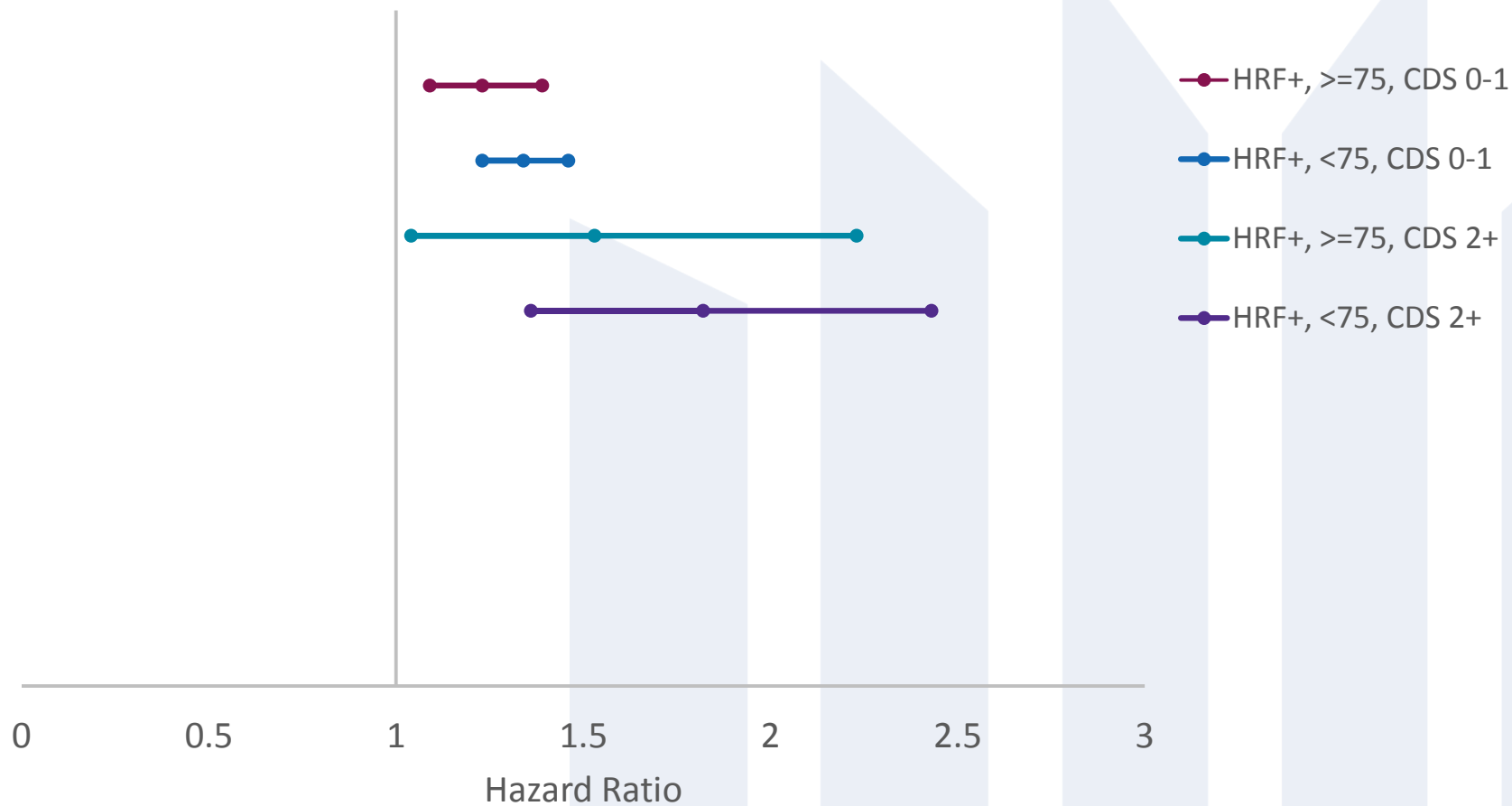
RR 0.84,
CI 0.68-1.00
p=0.046

Adjuvant Chemotherapy in Stage 2 Colon Cancer



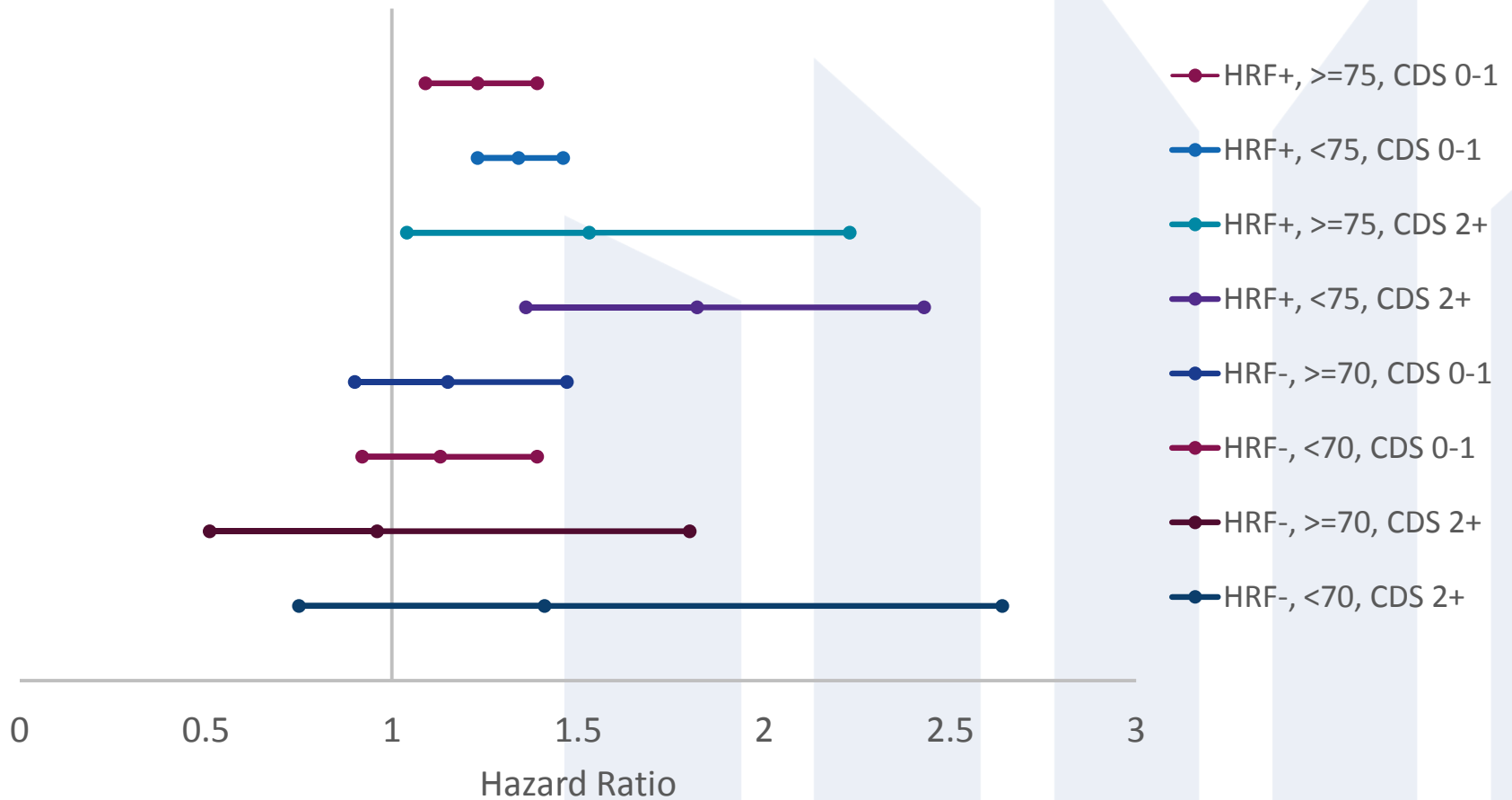
**unpublished*

Adjuvant Chemotherapy in Stage 2 Colon Cancer



**unpublished*

Adjuvant Chemotherapy in Stage 2 Colon Cancer



**unpublished*

Conclusion

- Right treatment, right reason, right time, right person
- Improves quality
- Clinical and HSR research can help answer these questions



AAS

Association for
Academic Surgery

Thank you!

Questions?

virginia.o.shaffer@emory.edu